



68/29 Bennelong Parkway WENTWORTH POINT, NSW

3

2

2

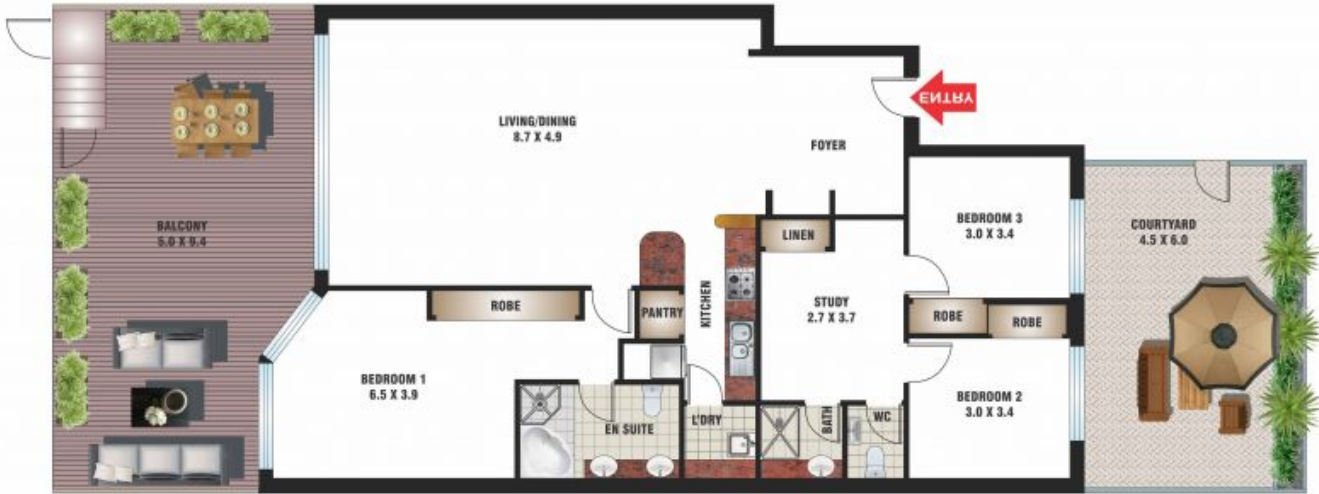
Views And Privacy From This Stunning North East Facing Ground Floor Three Bedroo

Built for the Sydney 2000 Olympics ?Mariners Cove? is the epitome of quality waterside apartment living offering unrivaled lifestyle, shopping, entertainment and transport facilities.

From here there are so many options within easy walking distance via a waterside promenade to cafes, restaurants, modern shopping precincts, state of the art sports facilities, public bus and ferry transport and much much more.

Number 68 is a large genuine three bedroom elevated ground floor apartment with special features including direct water front, private entertainers balcony so close to the waters edge you can almost touch the fish, and feel as though you are virtually living within th

Paul Pace
0416 128 177



68/29 Bennelong Parkway, Wentworth Point



FLOOR PLAN BY BORTEX PTY LTD PH: 0414 922 679

"The information contained herein has been provided by our Principal and third parties, which we merely pass on without any representation or warranty given, intended or implied by us as to its correctness and with no liability accepted by us in this regard. You must rely on your own inquiries as to its accuracy or otherwise."

68/29 Bennelong Parkway

WENTWORTH POINT, NSW

